



# Skin S 70





By  
AIA Salazar-Navarro

Decorative  
Lighting

Suspension  
lamps

## Description

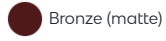
Suspension lamp (S) made out of opal white polymethacrylate, coated in a stainless steel, cylindrical metal mesh, lacquered in steel or satin bronze finishes. Plug-in version available with a connector (SC), with 2.5 m of cable.

Technical Description			Packaging		
Degree of Protection		Regulation	ON-OFF	Net Weight per Item	2.00 Kg
Class		Light type	T5	Box Sizes	19 x 116,5 x 19,5 cm - 106 m3
Regulable	--	Light source included	No	Gross Weight	3.00 Kg
Casambi		Energy classification	-		
Certifications					

## Finishes

---

SHADE



Bronze (matte)



Steel

## Collection

---



Skin S

## Codes

## Luminaire

## Light Source

654310U

SKIN S70 FLUO SILVER USA

LED 2 x 7W (G5) / Flu. 2 x 14W (G5)

654314U

SKIN S70 FLUO BRONZE USA

LED 2 x 7W (G5) / Flu. 2 x 14W (G5)

DOWNLOADS



Skin\_Assembly\_USA.pdf

